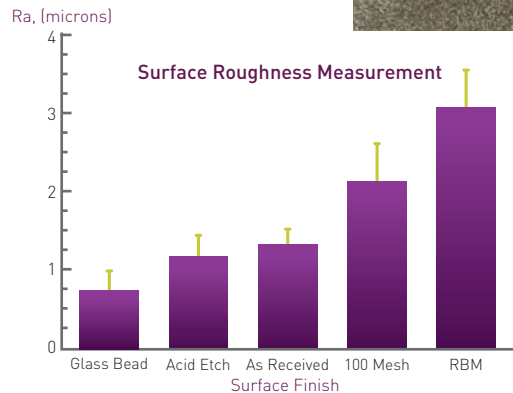
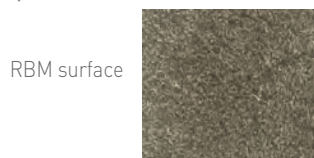


FOUR IMPLANTS TWO CONNECTIONS TWO PROVEN SURFACES

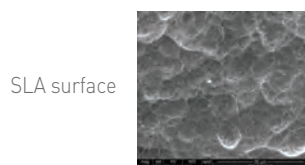
RBM Surface Treatment—

It is well established that a roughened surface aids in implant fixation process. Osteolysis is the primary concern. RBM Bio-Coat has succeeded in developing a process that provides a roughened surface to aid in osseointegration, without the presence of unwanted debris embedded in the implant surface.



SLA Surface Treatment—

SLA is a rough surface technology accomplished by using micro-grit sandblasting. As a result, the titanium implant surface will exhibit a rough morphology and numerous small holes. The next step is to double etching process to the implant surface in order to remove all implant contamination. The average size roughness is $2.0 \pm 5.0 \mu$ for an ideal cell attachment.



www.spiraltech.com

OUR COMPANY



Founded in 2012, SpiralTech was created to fill a void in the dental implant world, simplified treatment and paired with the best technologies and service.

We wanted to provide innovative designs, along with the necessary education and service, to doctors of all experience levels.

Ultimately, we desired to enhance the doctor and patient experience. The ESi implant product line, is the first step in what we see as a continuous journey towards clinical excellence.

HEADQUARTERS



875 N. Michigan Avenue, Suite 3106
Chicago, IL 60611
312-440-7777
Toll free (888) 991-7997

ISO 13485:2003
EC Certificate US15/842415
F/7.5.1.1_41 Rev.02 9.9.16

© 2016 SpiralTech Superior Dental Implants, Inc. All Rights Reserved.

ESiTM Essential Spectrum Implant



ESi IMPLANT SYSTEMS

The ESi implant is versatile and can be used in most clinical situations. The ESi has advanced thread spectrum system features found on no other implant.

Placement of the ESi implant is intuitive and fast. The self-tapping threads allow for retracting and re-positioning to the desired location. Great for beginning and experienced surgeons alike.

All implants are provided with the corresponding cover screw and average size healing abutment.

Benefits of ESi

- Multi-thread system assisting surgeons in smooth insert to a needed location
- Implant can be redirected after insertion
- First thread helps in cutting into bone and permitting fine-tuning to desired location
- Second thread system stabilizes while third thread system containing fossa avoids stressful bone environment within the middle thread of the implant; containing bone particles to enhance osseointegration
- Implant crestal area contains micro-rings with converging angle which reduces bone trabecular resorption especially in immediate placement
- Good for both hard and soft bones
- High quality precision
- Economical price point

toll free 888-991-7997



HEX CONNECTION



CONICAL CONNECTION



ESi Implant maintains root formation

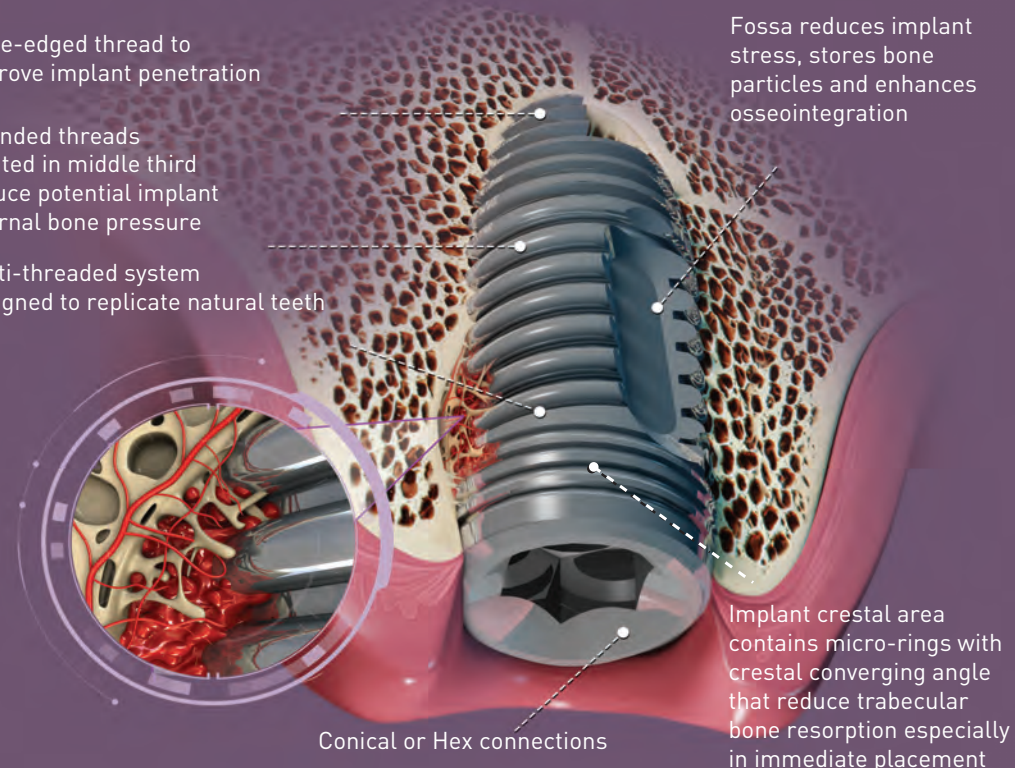
ONE OF OUR SUPERIOR PRODUCTS, **ESi** IMPLANT

Knife-edged thread to improve implant penetration

Rounded threads located in middle third reduce potential implant internal bone pressure

Multi-threaded system designed to replicate natural teeth

Fossa reduces implant stress, stores bone particles and enhances osseointegration



Conical or Hex connections

Implant crestal area contains micro-rings with crestal converging angle that reduce trabecular bone resorption especially in immediate placement